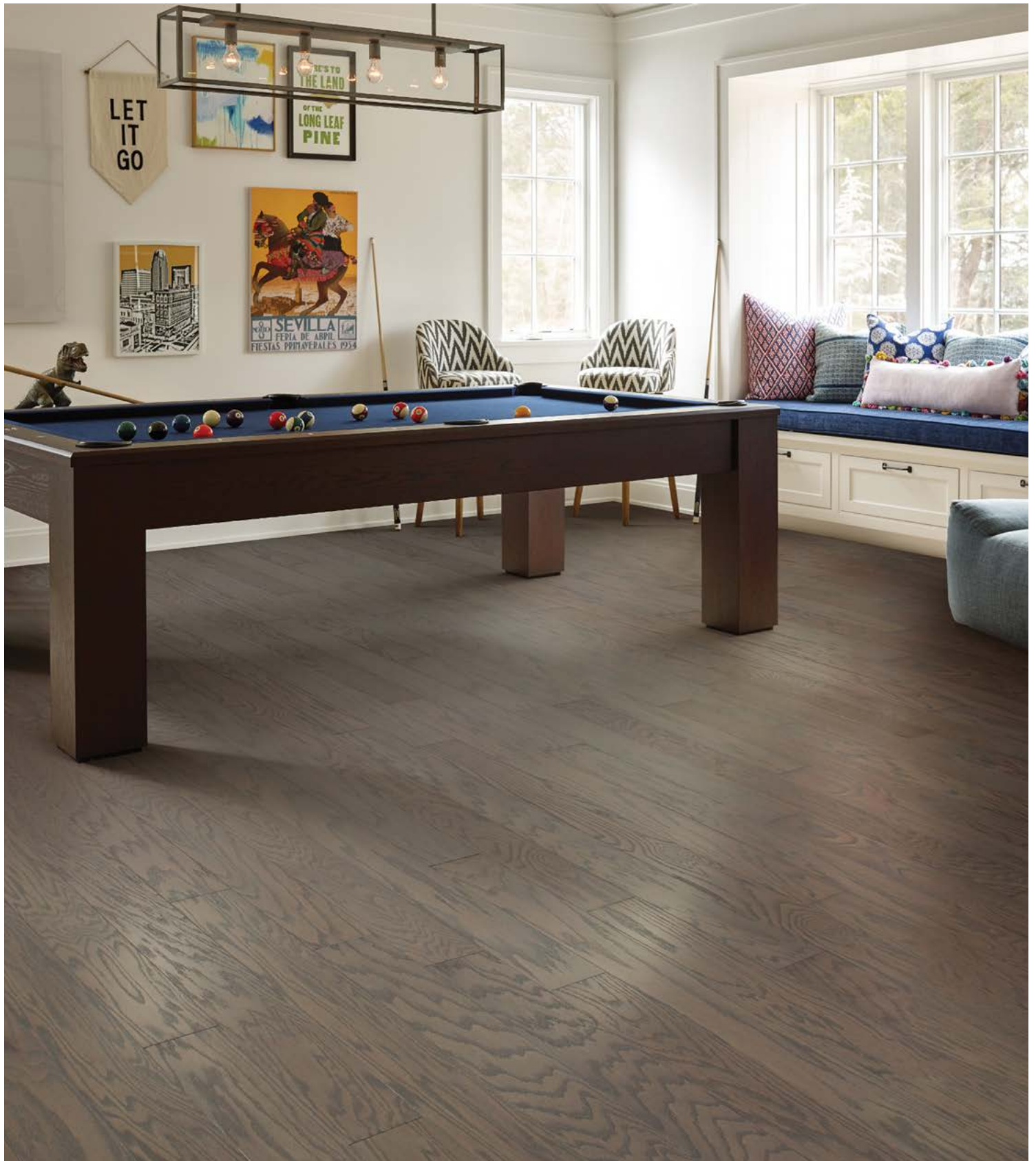


# ENGINEERED

Smart (WW656 Silver)



543 Weathered

# ENGINEERED

Smart (WW656 Silver)

	US Units	Metric Units
<b>Style Number</b>	<b>WW656</b>	
<b>Construction</b>	Engineered	
<b>Species</b>	Red Oak	
<b>Nominal Overall Thickness</b>	3/8"	8.2 mm
<b>Nominal Width</b>	5"	127 mm
<b>Finish</b>	ScufResist Platinum	
<b>Gloss Level</b>	20%	
<b>Surface Texture</b>	Smooth	
<b>Edge Description</b>	Micro Bevel	
<b>End Description</b>	Micro Bevel	
<b>Profile</b>	Tongue And Groove	
<b>Weight per Carton</b>	34.5 lbs	15.64 kg
<b>SQFT per Carton</b>	23.66 sq ft	2.19 sq m
<b>SQFT per Pallet</b>	1419.6 sq ft	131.88 sq m
<b>Installation Methods</b>	Nail, Staple, Glue, Floating	
<b>Installation Grade</b>	Above, On, Below	
<b>Variation</b>	High	
<b>GREENGUARD® Certified</b>	Yes	
<b>Cradle-to-Cradle Certified</b>	Yes	
<b>Radiant Heat Approved</b>	Yes	
<b>Residential Warranty</b>	Lifetime	
<b>Commercial Warranty</b>	5 Year Commercial	
All measurements are nominal.	Cartons may include random lengths.	

## Suggested Adhesive

Style Name	Style Number
35MC	HS105
Urebond Plus	SWADH

**Trim Pieces** length: 78" (\*Overlap Reducer and Overlap Stairnose are designed for floating installations only. These items are non-stocking - but are available through a quick-ship program. Delivery should take approximately 2 to 3 weeks.)



**SFR18**  
Flush Reducer



**SRO18**  
\*Overlap Reducer



**SFS18**  
Flush Stairnose



**SSO18**  
\*Overlap Stairnose



**SCR18**  
Threshold / Carpet Reducer



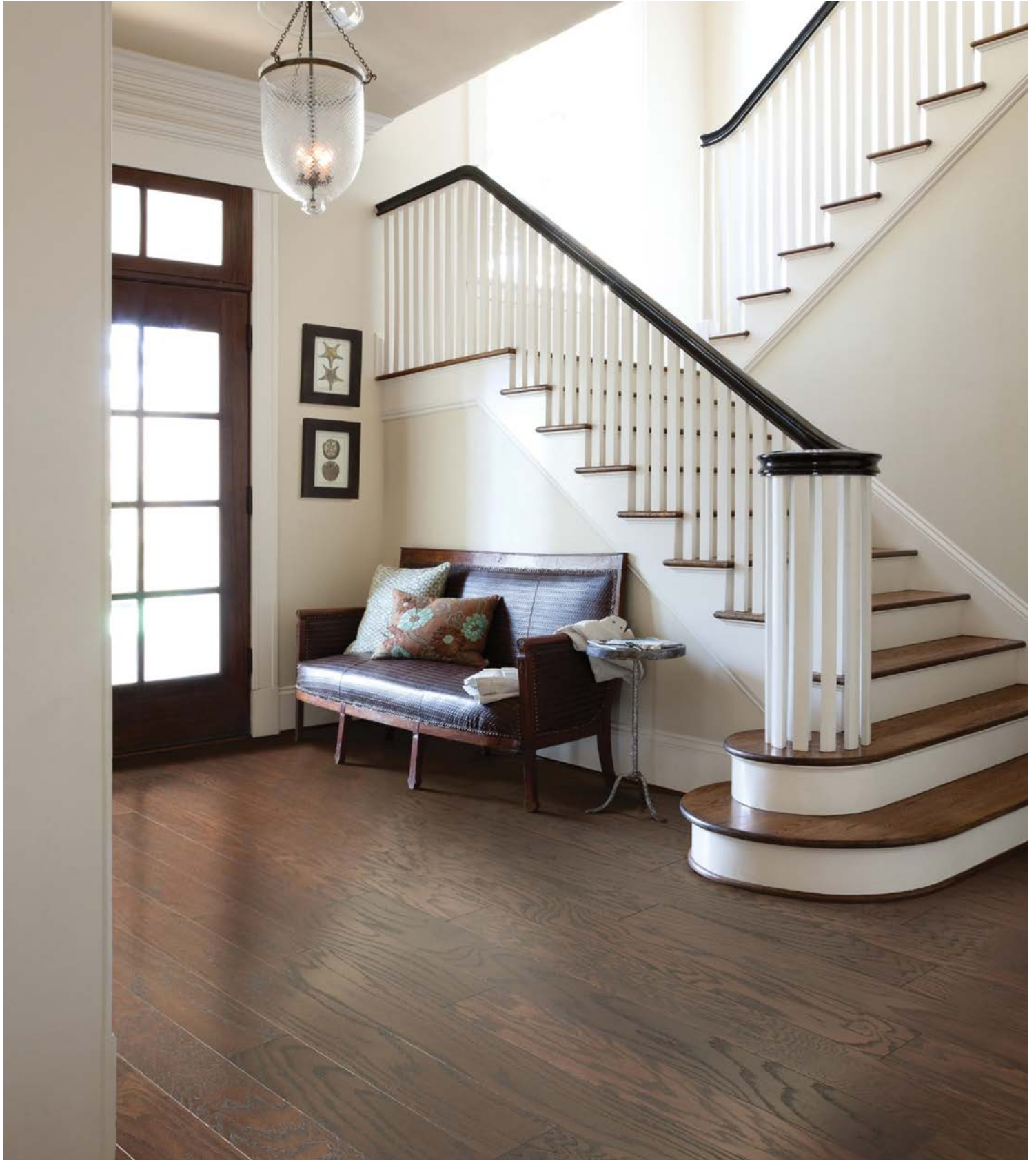
**SWTM8**  
T-Molding



**SQTR8**  
Quarter Round

# ENGINEERED

Smart (WW656 Silver)



938 Coffee Bean

# ENGINEERED

Smart (WW656 Silver)

## Colors



135 Rustic Natural



223 Caramel



543 Weathered



780 Gunstock



874 Hazelnut



938 Coffee Bean



947 Cherry



1102 Biscuit Lg



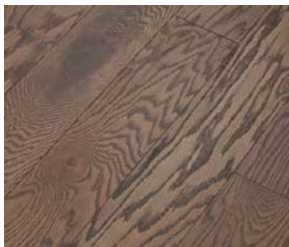
5013 Charcoal



7011 Chocolate



7087 Flax Seed Lg



7091 Kona Lg